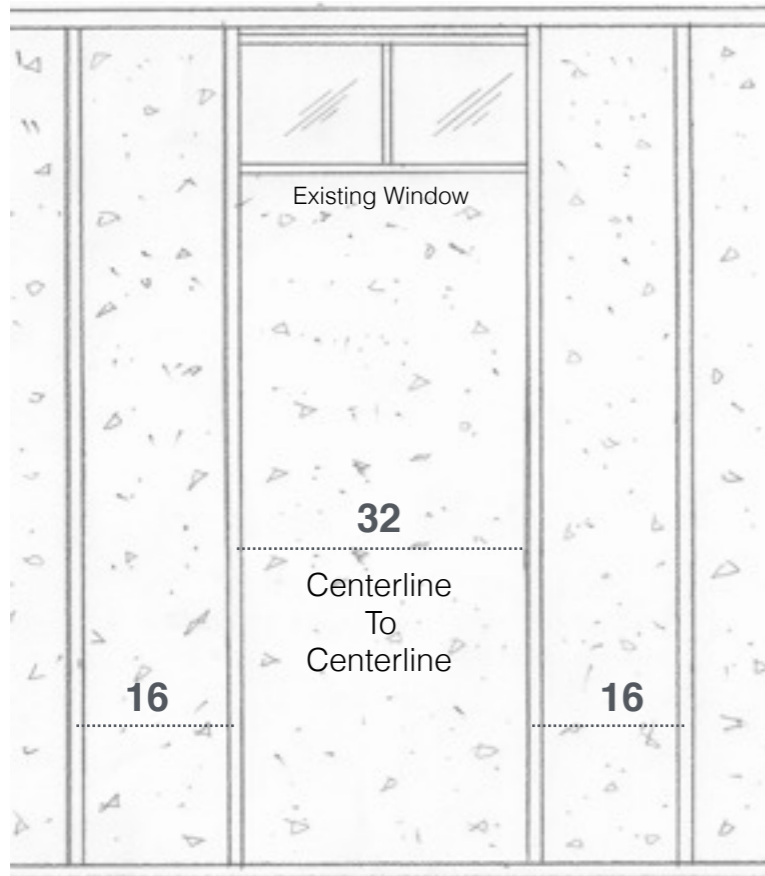


# CHASE WINDOW™ Installation Instructions

FOR DRY  
LOCATIONS  
ONLY

NOTE: Always follow your local building codes

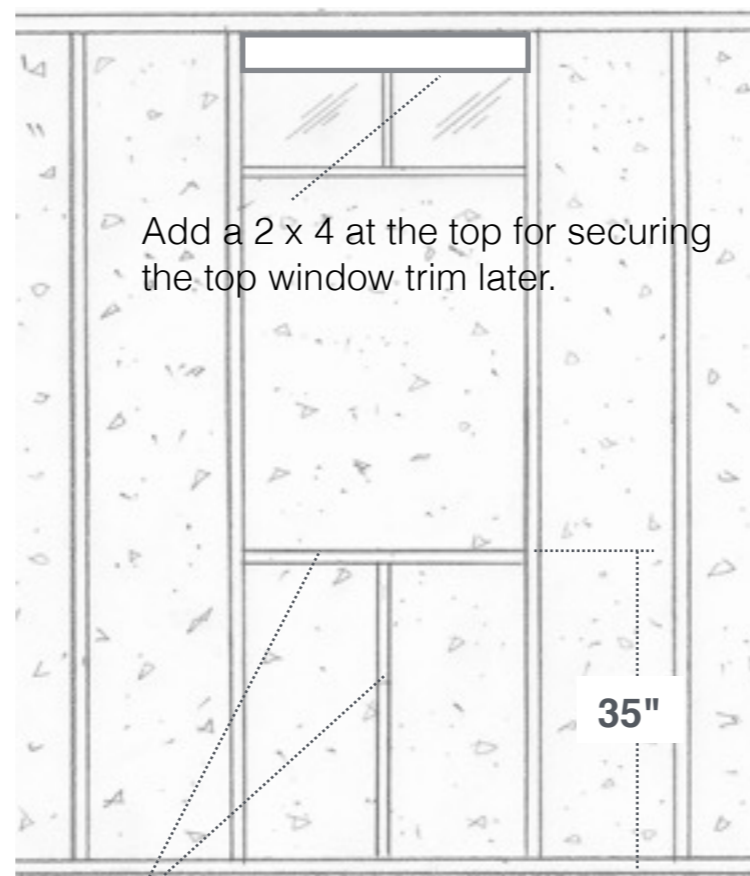
## 1 Set Your Studs



The Chase Window requires a 32" on center stud spacing in the area that the window is to be installed. Be as accurate as possible on the 32 inch spacing as this will affect the window fit. The opening between the two studs surrounding the window should be approximately 30.5".

We recommend that the remaining area have studs on 16" centers. You could switch to 24" centers if desired and if allowed by your local code.

## 2 Install Sill Frame and Header

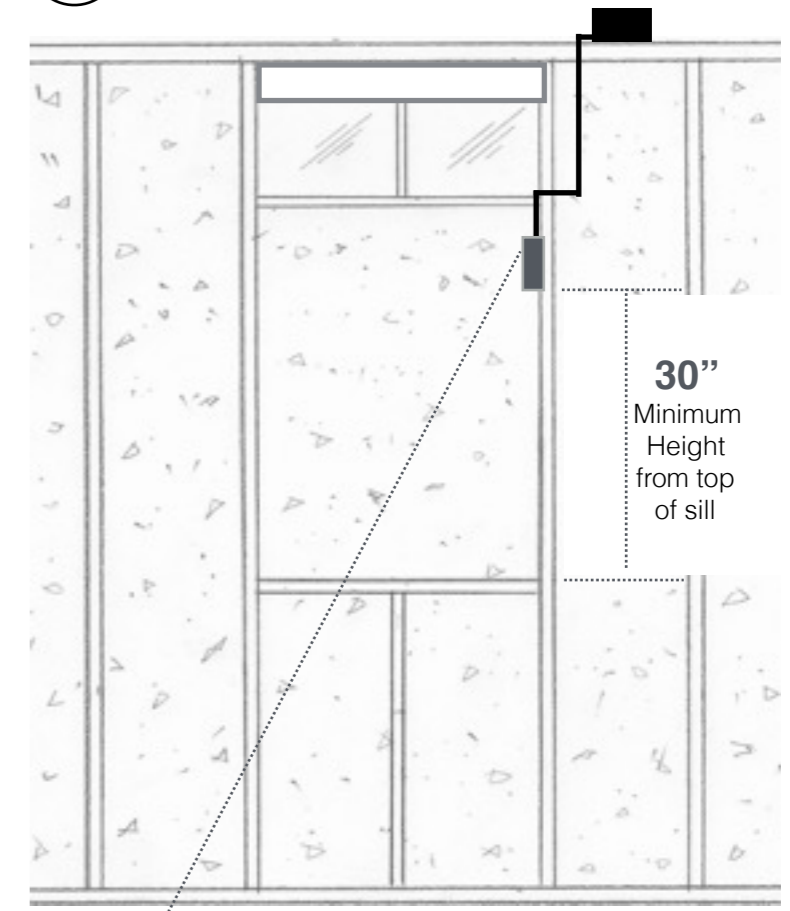


Using a level install a 2 X 4 sill and support 35" above the floor.

The window sill height of 35" is optional. 35" is a good height for a basement build but the height can be lower or higher as long as the Chase Window will fit above it.

**NOTE: This frame design is for non-load bearing walls. For frame design for load bearing walls refer to your local building codes.**

## 3 Add Power



Add a 120v 15amp standard wall outlet.

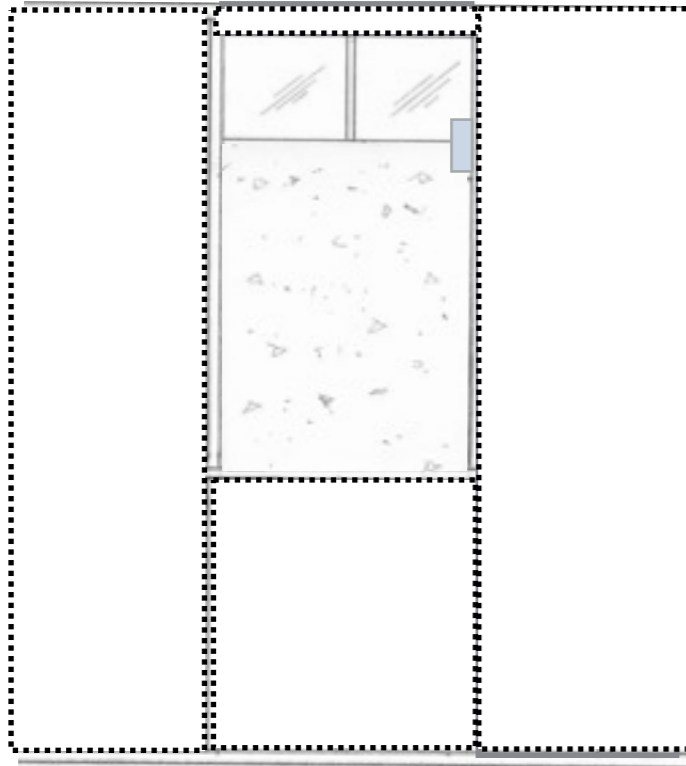
It is required that the power provided for the window is from the main switched lighting circuit for the area. This way the window is powered whenever the area is lit. A darkened window decreases room comfort.

Electrical inspection should be done at this point. The Chase Window is treated as a lighted sign from a code viewpoint.

# CHASE WINDOW™ Installation Instructions

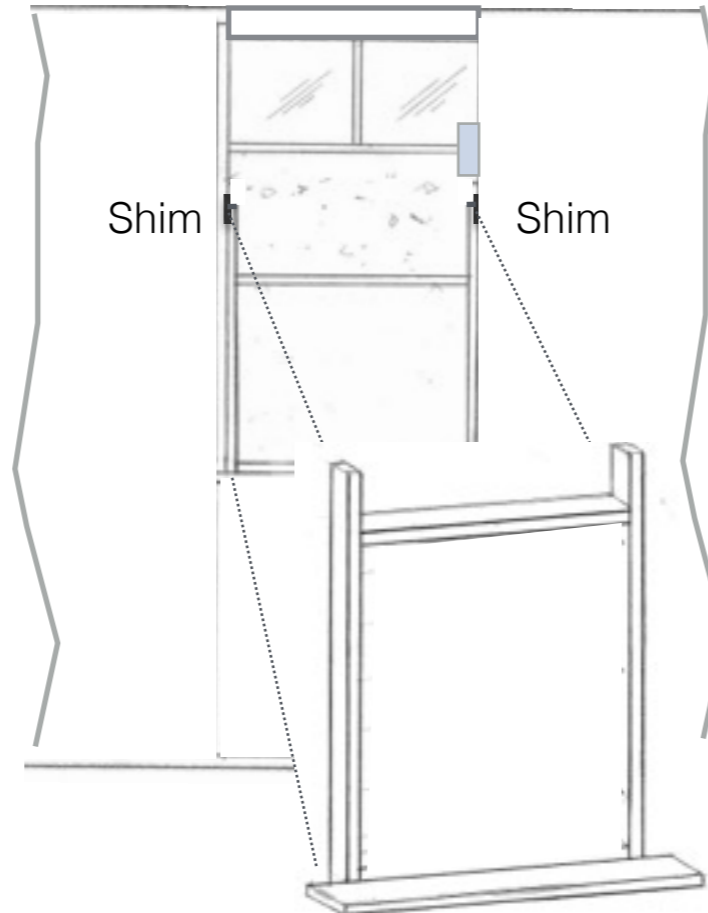
FOR DRY  
LOCATIONS  
ONLY

## 4 Sheetrock



Sheetrock the wall in the normal manner.

## 5 Fit the Chase Window

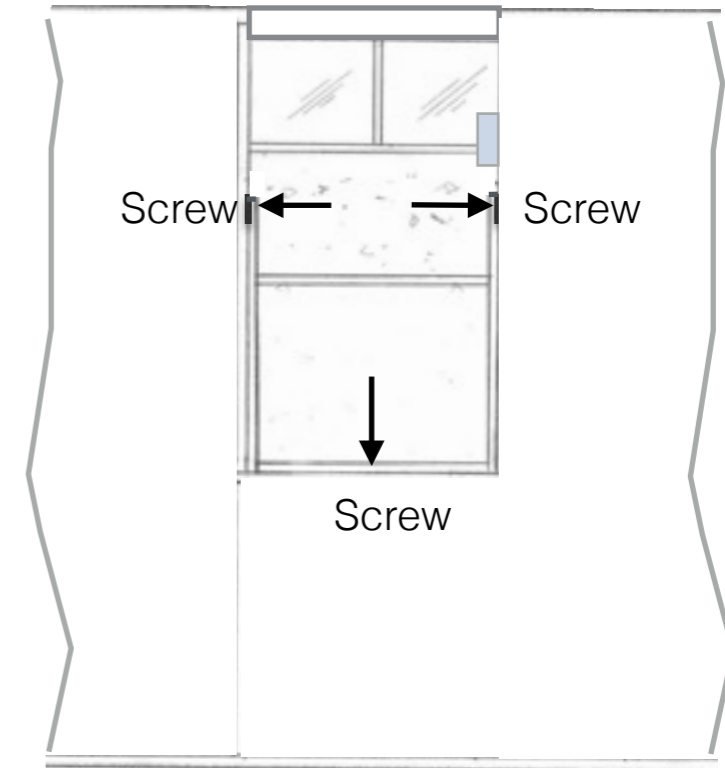


Lift the Chase Window (without the sash) and place it on top of the sill.

Push the window in at the bottom as far as it will go. Center the window (left to right) in the window opening.

Shim the window, left and right at the top two mounting holes

## 6 Secure The Unit



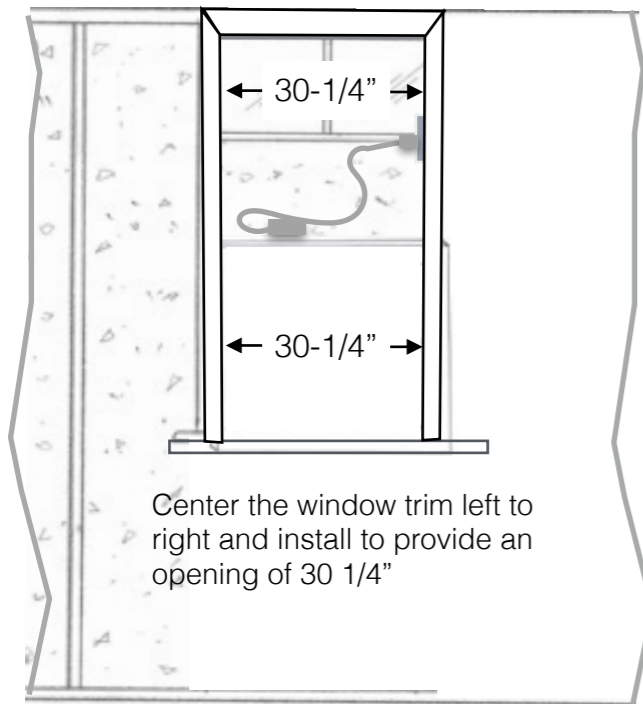
Secure the unit first with (1) screw through the sill mounting hole followed by (2) screws into the two studs (drive through the mounting holes and through the shim).



# CHASE WINDOW™ Installation Instructions

FOR DRY  
LOCATIONS  
ONLY

## 7 Install the Window Trim



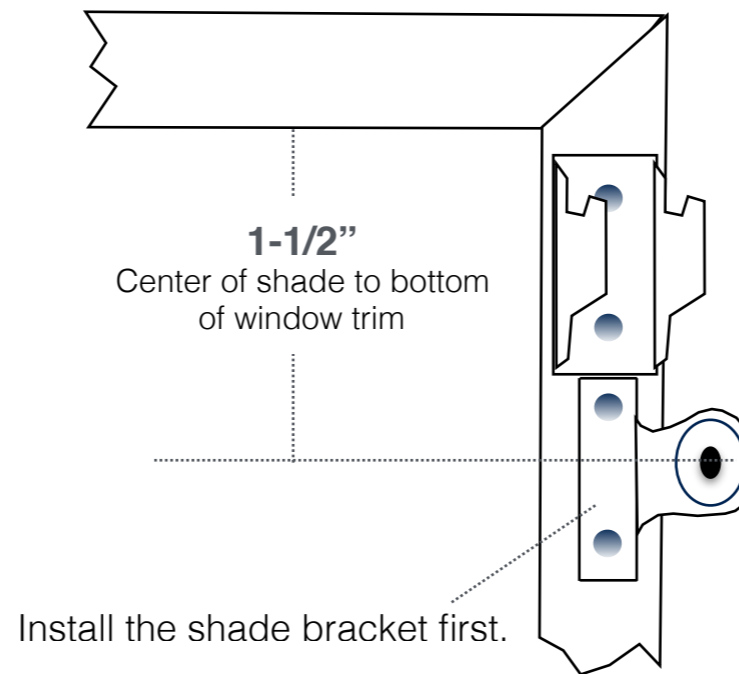
Install the side pieces of window trim so that there is a 30-1/4" space opening between them.

Mount the power supply to the window at the location of the velcro. Plug in the power supply and test the unit.

If the light blinks click the mode button repeatedly until lights remain constant on.



## 8 Install Shade and Curtains Brackets

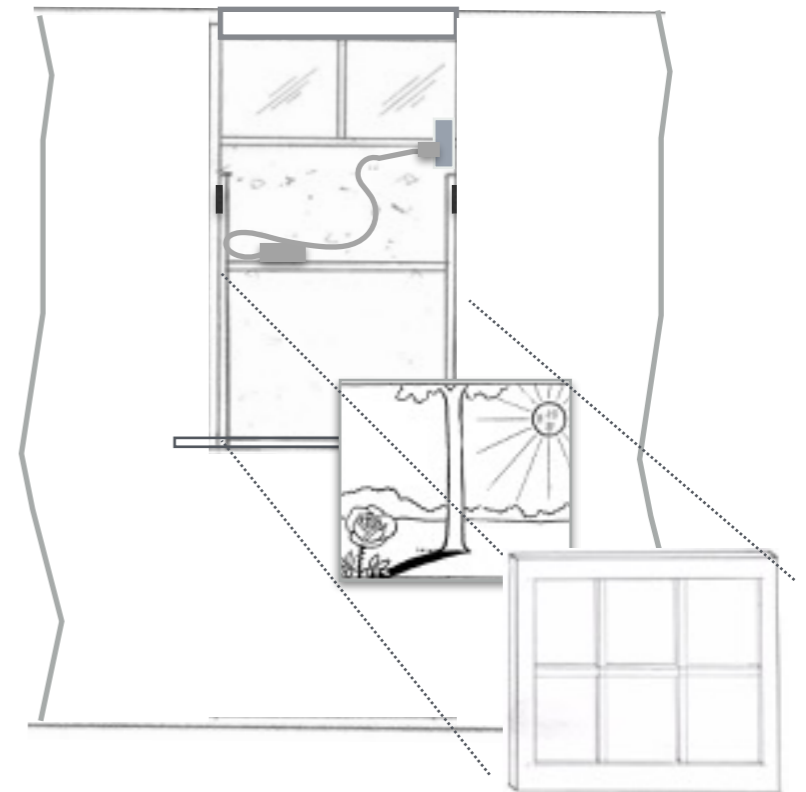


Install shade brackets to the two side trim pieces per the above figure. The spacing shown allows outdoor light to shine in on the ceiling as well as on the shade.

Install the curtain brackets to the two side trim pieces directly above the shade brackets.

Cut the shade to fit (a fine tooth hacksaw saw or a combination/miter saw works well). Trim the shade edge with scissors. Install the shade and your curtains.

## 9 Install the Scene and Sash



Install the scene by clipping the upper corners under the spring clips and sandwiching the scene by installing the sash. CAUTION: Do not pull too hard on the spring clips or bending may occur.

Center the window sash in the window opening and push completely in at the bottom. Latch the window at the top. Adjust the window centering at the bottom to for best alignment and appearance.

**Chase Productions, LLC**  
www.chasewindow.com  
email: chasewindow@aol.com  
copyright Chase Productions 2016  
Chase Window is a trademark of Chase Productions, LLC